



Grouping Materials

If we wish, we can sort materials into groups which have similar properties.

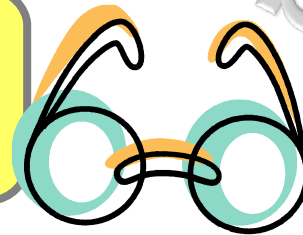
Steel and Stone are hard.



Rubber and rope are flexible.



Glass and cling film are transparent.





Click on each material to group it.

Hard	Flexible	Brittle

Hammer

Belt

Bulb

Wine Glass

Brick

Anchor

Rope

Fishing Rod



Click on each material to group it.

Strong	Elastic	Brittle

Rubber band

Quartz

Chalk

Spring

Wood

Marble

Glass

Porcelain



Click on each material to group it.

Tough

Magnetic

Translucent

Shower
Curtain

Stained Glass
Window

Marble

Tracing
Paper

Iron

Diamond

Copper

Steel



Can you work out how these materials have been grouped?

Click to
Reveal

Click to
Reveal

Click to
Reveal

Aluminium

Velvet

Perspex

Brick

Cotton

Glass

Iron

Nylon

