



# Human Teeth



# Types of Teeth

canines

molar

incisor

premolar



Humans have four types of teeth. They are called incisors, canines, premolars and molars.

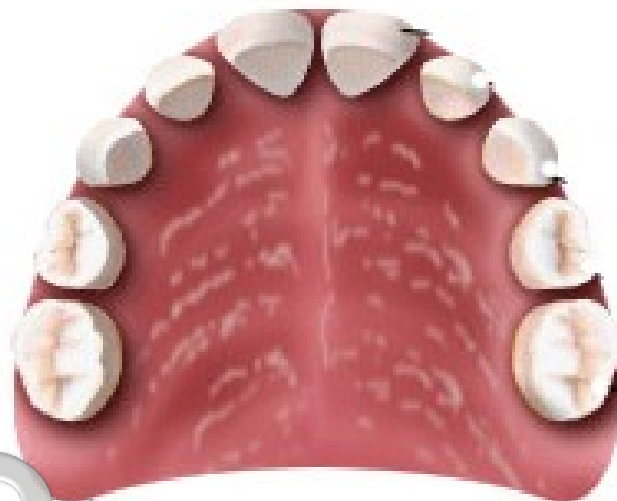


canines

molar

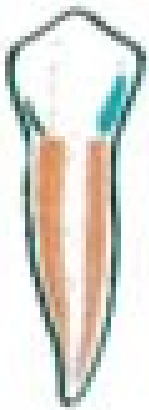
incisor

premolar



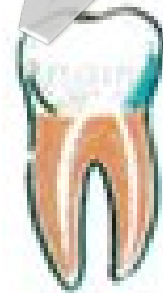
Draw some lines to match the teeth to the labels.

For crushing and grinding food. The teeth are flat and wide.



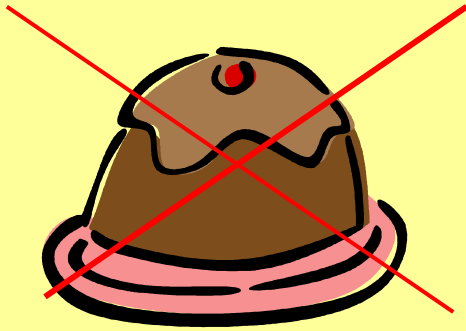
Canine teeth are sharper than the rest. They are used for tearing and ripping food.

Molars and premolars are used for crushing and grinding food. The teeth are flat and wide.



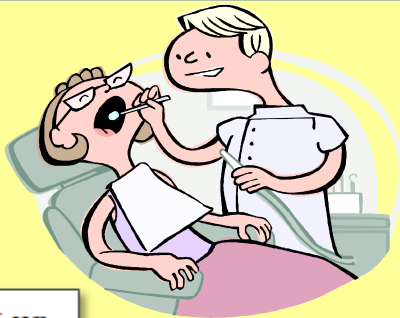
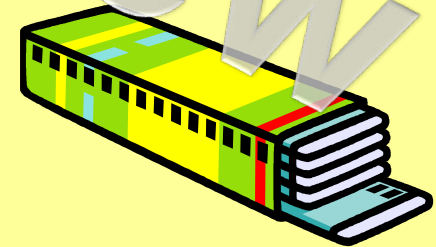
# Keeping Teeth Healthy

Brush your teeth after meals.



Cut down on sugary food and drinks.

Chew gum after eating.



Go to the dentist every six months.